

# Immersive Learning



Our immersive experiences and installations provide a unique opportunity to learn through personal experience. This gives you a powerful insight into how it might feel to encounter the everyday challenges of people with sensory processing difficulties.

## Immersive Experiences

Our 'Sensory Classroom' and 'Sensory Dining Room' can be run in-house for large groups.

## Workshops

Our 'FEEL IT' workshop offers the opportunity to experience our 'Being Ben', 'Lola's World' and 'Mehdiosmia' installations.

## Conferences & Exhibitions

We talk at and take our experiential learning installations around the world to conferences, events and training days. If you are looking for a keynote speaker or would like to hear more about our installations, get in contact. For upcoming dates visit [www.sensorspectacle.co.uk](http://www.sensorspectacle.co.uk).



# Immersive Experiences

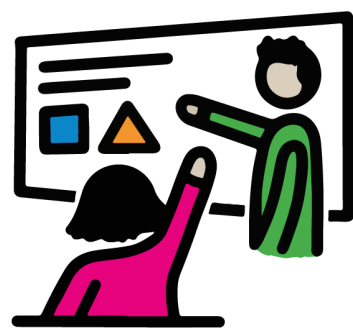
All of our immersive experiences draw upon descriptions and explanations shared by people living with SPD. They are a great way to create awareness and really get people thinking and talking about how SPD feels.

## The Sensory Dining Room



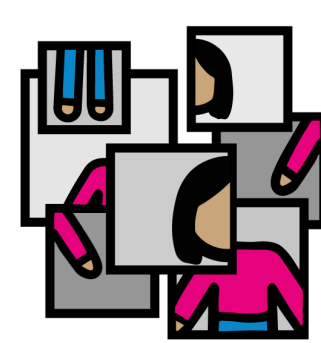
This immersive learning experience offers you the opportunity to understand what it feels like to be served a 3 course meal whilst encountering sensory processing difficulties.

## The Sensory Classroom

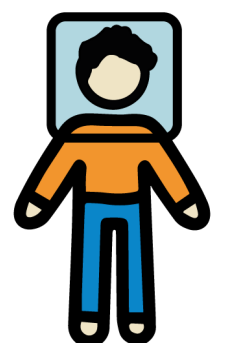


This immersive learning experience offers you the opportunity to understand first hand what it feels like to be in a lesson with auditory, visual and olfactory processing difficulties.

## Lola's World



## Being Ben



## Mehdiosmia



## Cristina



The experiential side makes the theory easier to understand



To find out more about our sensory installations, visit our website.



Supporting people with SPD

Training | Insights | Resources

[www.sensorspectacle.co.uk/immersive-learning](http://www.sensorspectacle.co.uk/immersive-learning)

# The Sensory Dining Room



This immersive experience offers you the opportunity to understand what it feels like to experience sensory processing difficulties during mealtimes.

## Overview:

Meal times are a really important part of our day, but for people with SPD it can be really stressful for lots of reasons. To support someone with their sensory needs effectively at mealtimes it is important that we are able to identify and empathise with their experience.

- This in-house training is great for team building or inset days
- It can be run in a variety of settings for up to 30 dinners per sitting
- It is suitable for education professionals, support and kitchen staff, plus anyone else who is interested in learning more about SPD
- The training last approximately 2.5 hours per sitting (plus set up time) and we normally run this twice in one day
- Please note that we need access to a kitchen and dining space, enough crockery for your staff team, a separate training space and onsite parking. We also need onsite access 2 hours prior to the first sitting as preparation time
- On completion staff will be awarded with a certificate
- If you would like to run this in-house, please contact us with your requirements



## You will learn:

- A first hand experience of how you might cope in a busy dining environment with SPD
- To recognise how the SPD impacts your experience of food and the dining environment
- Through self-reflection you will learn to empathise with students and develop strategies to support people during mealtimes through your own personal experience



“

*I thought this was brilliant!*

*Experiential learning is always best. Although we know the theory and science, and see the childrens reactions, there is nothing so confirming as experiencing for ourselves tastes and textures that are unappetising or even repugnant.*

”



**Supporting people with SPD**

Training | Insights | Resources

[www.sensorspectacle.co.uk/immersive-learning](http://www.sensorspectacle.co.uk/immersive-learning)

# The Sensory Classroom

This immersive experience offers you the opportunity to understand what it feels like to experience sensory processing difficulties in a classroom environment.



## Overview:

Classrooms can be really overwhelming environments. When we are supporting someone with sensory needs in the classroom, it is important that we are able to identify and empathise with their experience.

- This in-house training is great for team building or inset days
- It can be run in a variety of settings for 30 people at a time
- It is suitable for education professionals and anyone else who is interested in learning more about SPD
- We have 2 versions of our Sensory Classroom; one for primary years and a different one for secondary years
- The training last approximately 2.5 hours (plus set up time) and can be run twice in one day
- It includes a workshop introducing how to recognise SPD in the classroom and experiential learning to understand how SPD can impact some students
- On completion staff will be awarded with a certificate
- If you would like to run this in-house, please contact us with your requirements



## You will learn:

- A first hand experience of how you might cope in a classroom environment with SPD
- To recognise how the SPD impacts your concentration and interaction in the class and how well you do at following the teachers instructions
- Through self-reflection you will learn to empathise with students and develop strategies to support people in the classroom through your own personal experience

“

*This was extremely enlightening, so distracting.  
I actually started to feel quite anxious that I was not keeping up.  
A great opportunity which I will utilise in my work.*

”



**Becky Lyddon**

**Founder of  
Sensory Spectacle  
& Experience  
Leader.**

Becky has a wealth of experience working with adults and children with complex health needs and disabilities, She qualified as a Makaton tutor and has won awards for her immersive installations focussing on the sensory world.

Becky has produced hundreds of videos, resources and training and travels far and wide raising awareness and educating on SPD.

## You may also be interested in the accompanying books:



**Available to purchase  
from our online shop.**



**Supporting people with SPD**

Training | Insights | Resources

[www.sensorspectacle.co.uk](http://www.sensorspectacle.co.uk)